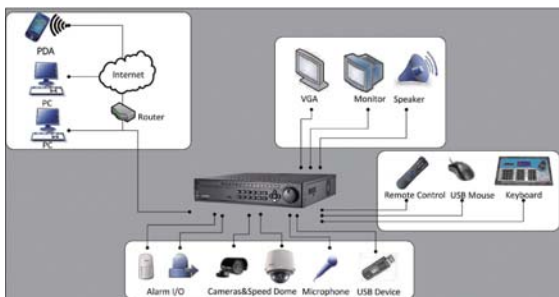


## DS-8104/8108/8116HDI-ST Standalone DVR



### Key Features

- H.264 video compression
- Up to 4CIF resolution recording
- HDMI and VGA output at 1920×1080P resolution
- eSATA interface
- 4/8/16-ch synchronous playback
- SADP(IP Finder), FTP, NTP, DHCP protocols



Rear Panel of DS-8116HDI-ST



- |                            |                                       |
|----------------------------|---------------------------------------|
| 1. Video in                | 10. eSATA interface                   |
| 2. Audio in                | 11. LAN interface                     |
| 3. Video spot out          | 12. Termination switch                |
| 4. Video out               | 13. RS-485 serial interface, seyboard |
| 5. Audio out               | 14. GND                               |
| 6. Line in                 | 15. 100~240 VAC power input           |
| 7. RS-232 serial interface | 16. Power switch                      |
| 8. VGA interface           |                                       |
| 9. HDMI interface          |                                       |

### Specifications

	DS-8104HDI-ST	DS-8108HDI-ST	DS-8116HDI-ST
<b>Video / Audio input</b>			
Video compression	H.264		
Analog video input	4-ch, BNC (1.0 Vp-p, 75 Ω), PAL/NTSC self-adaptive	8-ch, BNC (1.0 Vp-p, 75 Ω), PAL/NTSC self-adaptive	16-ch, BNC (1.0 Vp-p, 75 Ω), PAL/NTSC self-adaptive
Audio compression	G.711		
Audio input	4-ch, BNC (2.0 Vp-p, 1 kΩ)	8-ch, BNC (2.0 Vp-p, 1 kΩ)	16-ch, BNC (2.0 Vp-p, 1 kΩ)
Voice talk input	1-ch, BNC (2.0 Vp-p, 1 kΩ)		
<b>Video / Audio output</b>			
HDMI output	1-ch, resolution: 1080P:1920×1080 /60 Hz; UXGA: 1600×1200 /60 Hz; SXGA: 1280×1024 /60 Hz; 720P:1280×720 /60 Hz; XGA: 1024×768 /60 Hz.		
VGA output	1-ch, resolution: 1080P:1920×1080 /60 Hz; UXGA: 1600×1200 /60 Hz; SXGA: 1280×1024 /60 Hz; 720P:1280×720 /60 Hz; XGA: 1024×768 /60 Hz.		
CVBS output	2-ch (1 Main Video Out+1 Spot Video Out), BNC (1.0 Vp-p, 75 Ω), resolution: PAL: 704×576, NTSC: 704×480		
Video loop out (optional)	4-ch	8-ch	16-ch
Encoding resolution	4CIF / 2CIF / CIF / QCIF		
Frame rate	Mode1: 4-ch: 4CIF @ 15 fps or 2CIF / CIF / QCIF @ 25 fps (P) / 30 fps (N) Mode2: 1-ch: 4CIF / 2CIF / CIF / QCIF @ 25 fps (P) / 30 fps (N), 3-ch: CIF / QCIF @ 25 fps (P) / 30 fps (N)	Mode1: 8-ch: 4CIF @ 12 fps or 2CIF / CIF / QCIF @ 25 fps (P) / 30 fps (N) Mode2: 2-ch: 4CIF / 2CIF / CIF / QCIF @ 25 fps (P) / 30 fps (N), 6-ch: CIF / QCIF @ 25 fps (P) / 30 fps (N)	Mode1: 16-ch: 4CIF @ 12 fps or 2CIF / CIF / QCIF @ 25 fps (P) / 30 fps (N) Mode2: 4-ch: 4CIF / 2CIF / CIF / QCIF @ 25 fps (P) / 30 fps (N), 12-ch: CIF / QCIF @ 25 fps (P) / 30 fps (N)
Video bit rate	32 Kbps ~ 2048 Kbps, or user defined (Max. 3072 Kbps)		
Audio output	2-ch, BNC (Linear, 600Ω)		
Audio bit rate	64 Kbps		
Dual-stream	Support, Sub stream: CIF / QCIF		
Stream type	Video , Video & Audio		
Playback resolution	4CIF / 2CIF / CIF / QCIF		
Synchronous playback	4-ch	8-ch	16-ch
<b>Hard disk</b>			
SATA	4 SATA interfaces	8 SATA interfaces	8 SATA interfaces
eSATA	1 eSATA interface		
Capacity	Up to 4TB capacity for each disk		
<b>External interface</b>			
Network interface	1 RJ45 10M / 100M self-adaptive ethernet interface		
Serial interface	1 RS-232 interface (for parameters configuration, maintenance, transparent channel); 1 RS-485 interface (for PTZ control); 1 RS-485 keyboard interface (for special keyboard control)		
USB interface	3, USB2.0		
Alarm in	8	8	16
Alarm out	4		
<b>General</b>			
Power supply	100 ~ 240 VAC, 6.3A, 50-60Hz		
Consumption	≤ 25W (without hard disk or DVD-R/W)	≤ 30W (without hard disk or DVD-R/W)	≤ 35W (without hard disk or DVD-R/W)
Working temperature	-10 °C ~ + 55 °C		
Working humidity	10% ~ 90%		
Chassis	19-inch rack-mounted 2 U chassis		
Dimensions (W × D × H)	440 × 450 × 90 mm		
Weight	≤ 8kg (without hard disk or DVD-R/W)		